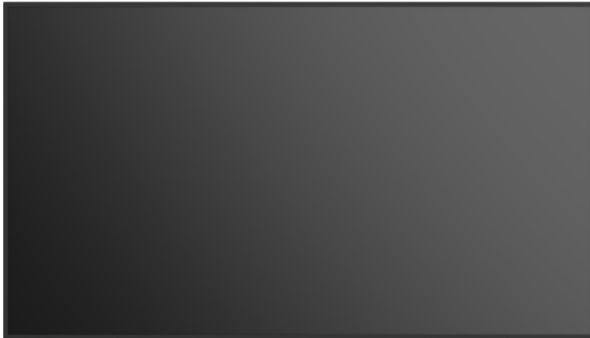


LCD MONITOR



PN-ME432
PN-ME502
PN-ME552
PN-ME652

MODEL

Dismantle Instruction

Table of contents

1. Scope	3
2. Tools for dismantling.....	3
3. Dismantle Procedure.....	3
4. Batteries.....	4
5. Back covers.....	5
(1) PN-ME432.....	5
(2) PN-ME502.....	6
(3) PN-ME552.....	7
(4) PN-ME652.....	8
6. PWB and other electronic components	9
(1) MAIN PWB	9
(2) POWER PWB.....	9
(3) T-CON PWB.....	10
(4) KEY PWB.....	11
(5) IR PWB	11
(6) WIFI CTL PWB.....	11
(7) Speaker	11
7. LCD Module bezels	12
(1) PN-ME432/PN-ME502/PN-ME552.....	12
(2) PN-ME652.....	12
8. Parts List.....	13

1. Scope

This document describes dismantling instruction according to Annex VII of Directive 2012/19/EU.

2. Tools for dismantling

- Screw Driver
- Nipper

3. Dismantle Procedure

This product can be dismantled by below steps.

1. Remove Back covers (section 5)
2. Remove Printed circuit boards (section 6)
3. Dismantle LCD (section 7)
4. Remove Electrolyte Capacitors (section 8)

4. Batteries

This model uses only AAA battery for remote control.

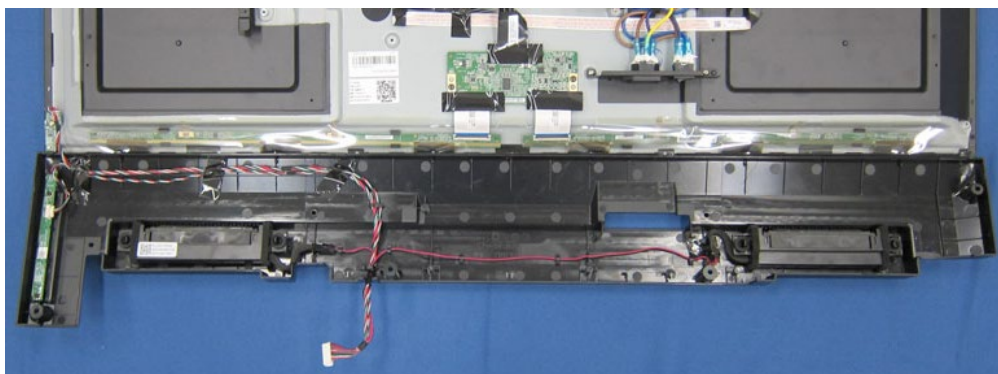
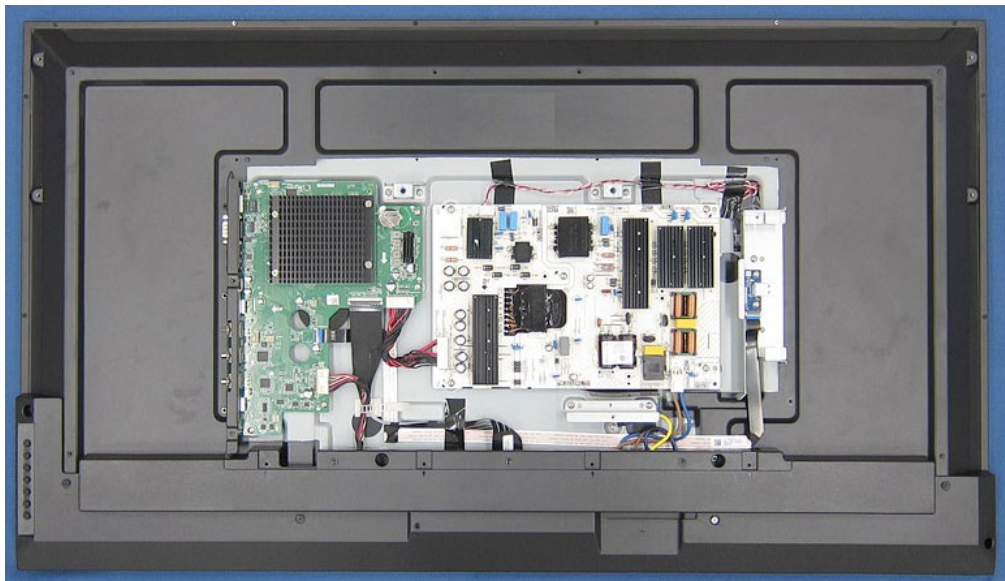
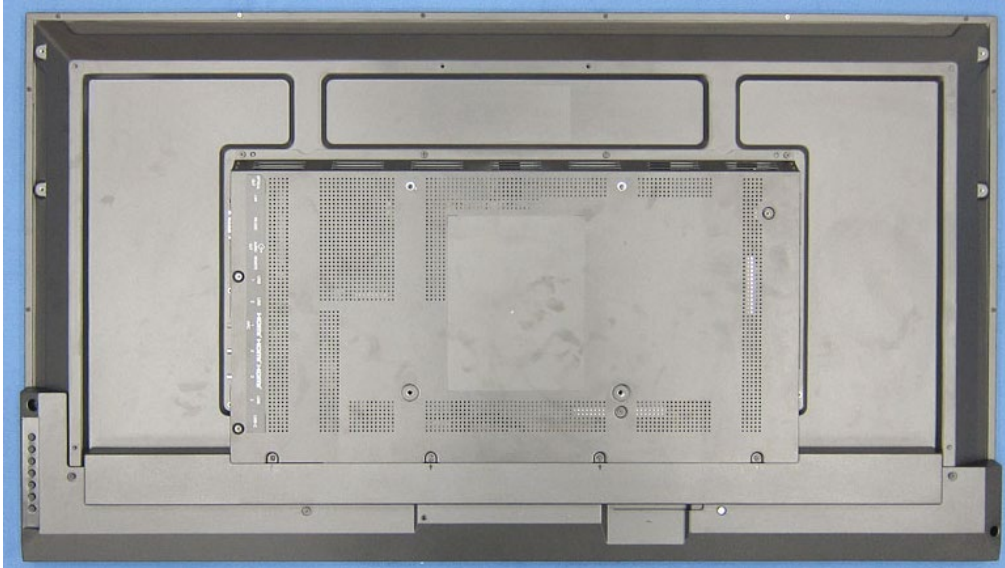
Battery can easily be removed.



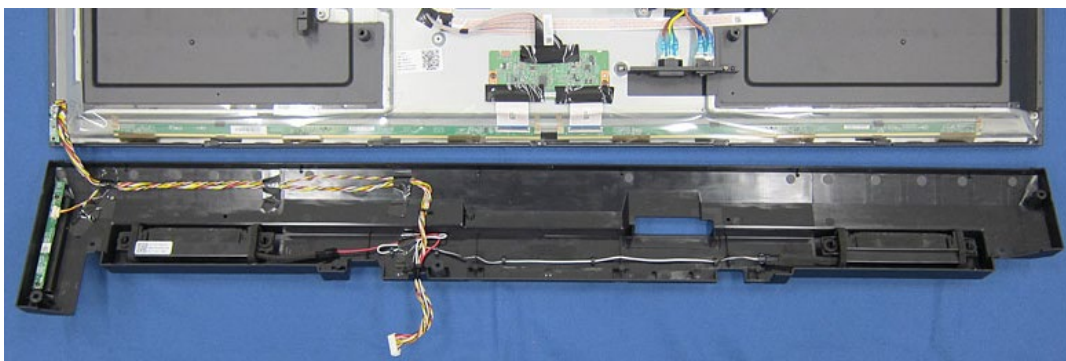
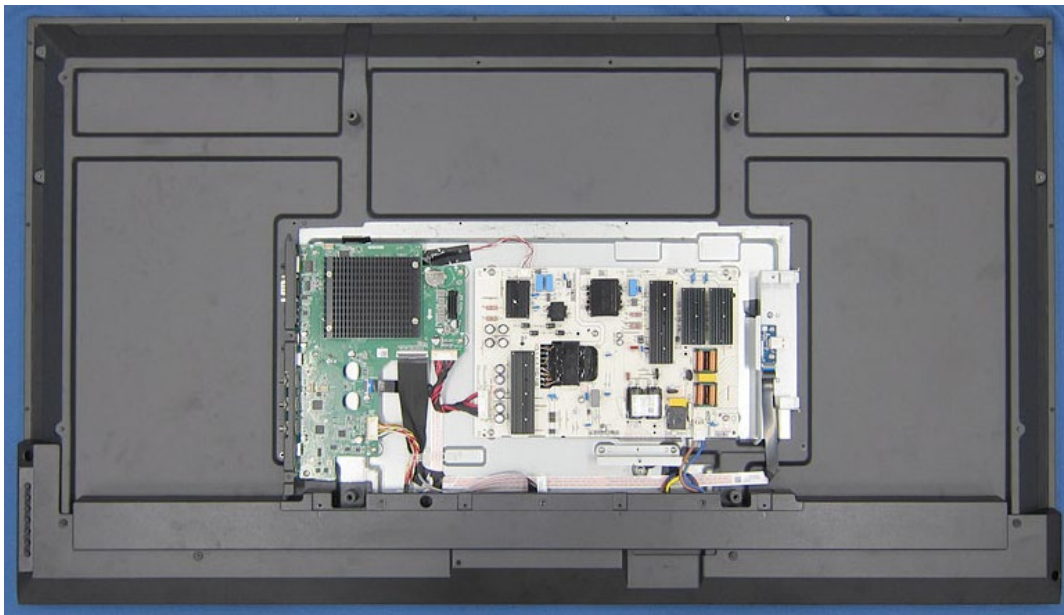
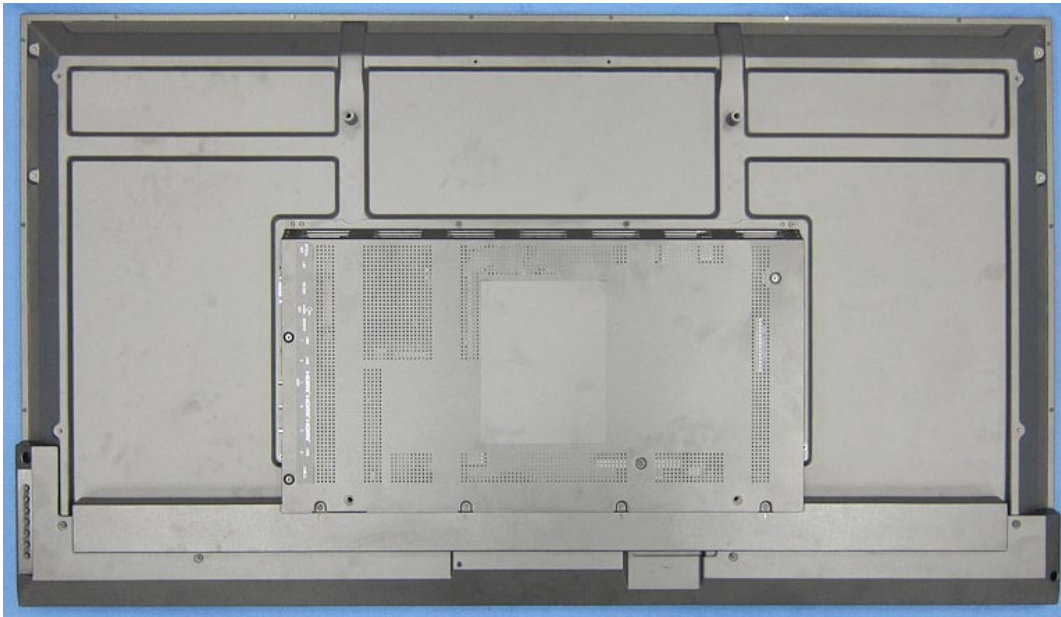
5. Back covers

back cover can be removed by screw driver.

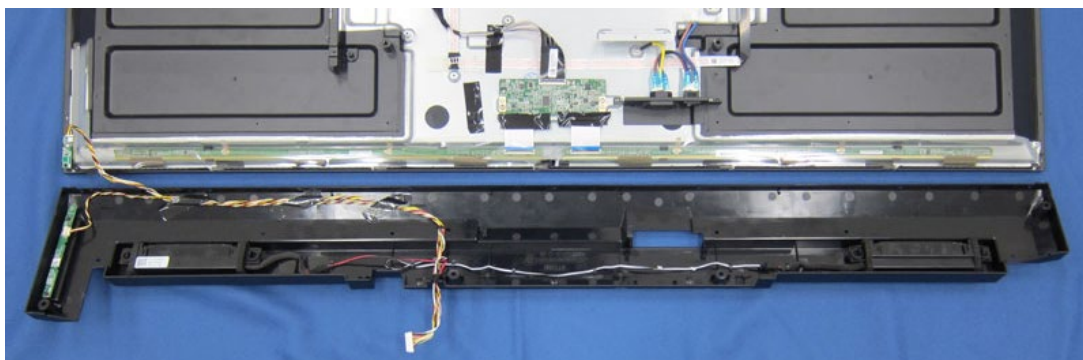
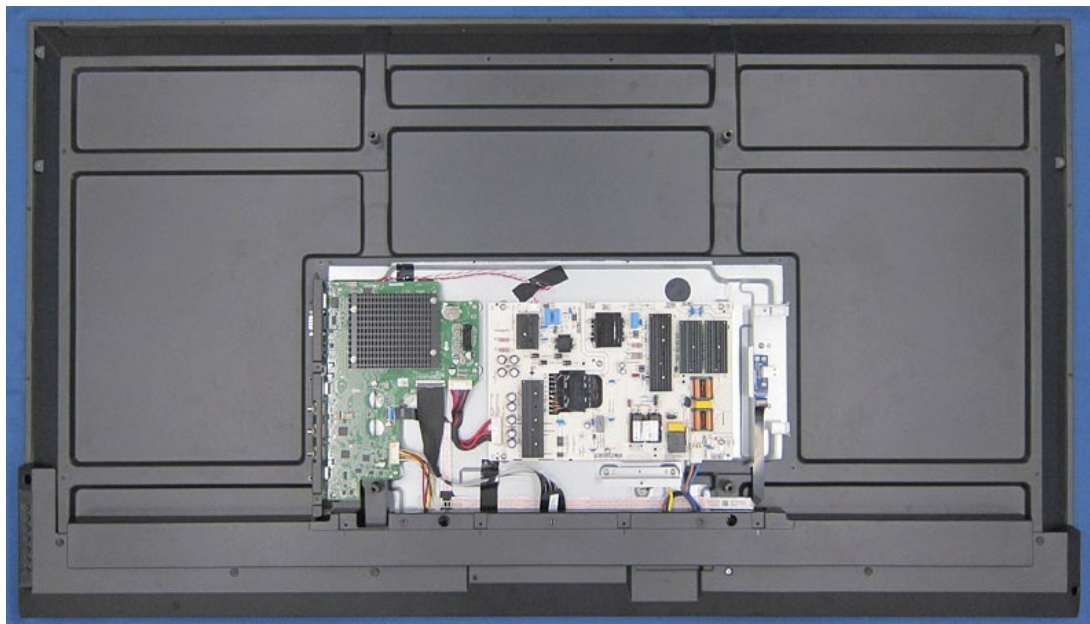
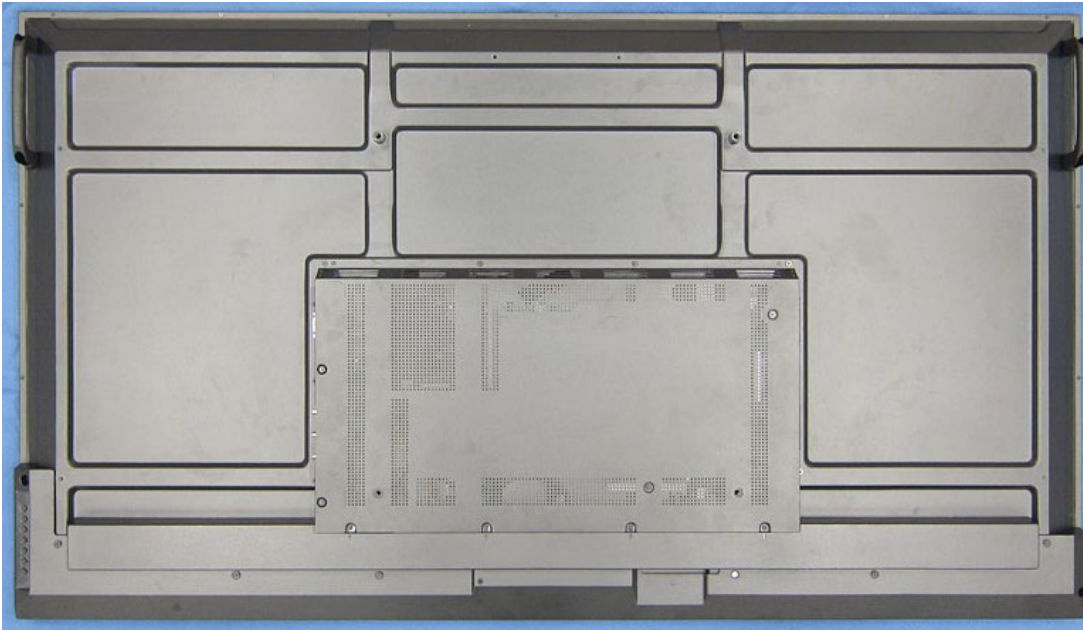
(1) PN-ME432



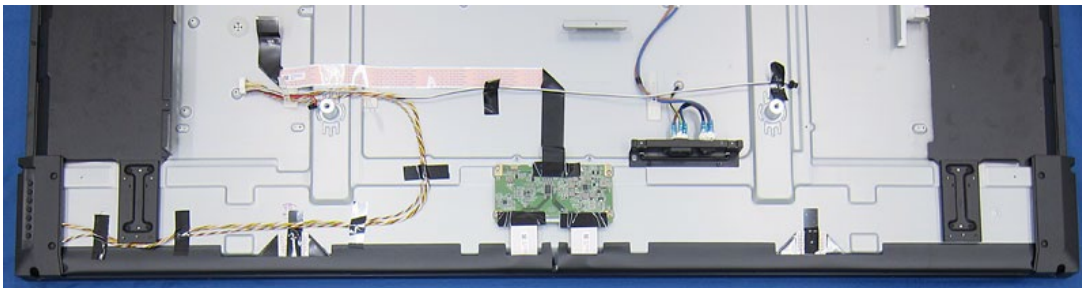
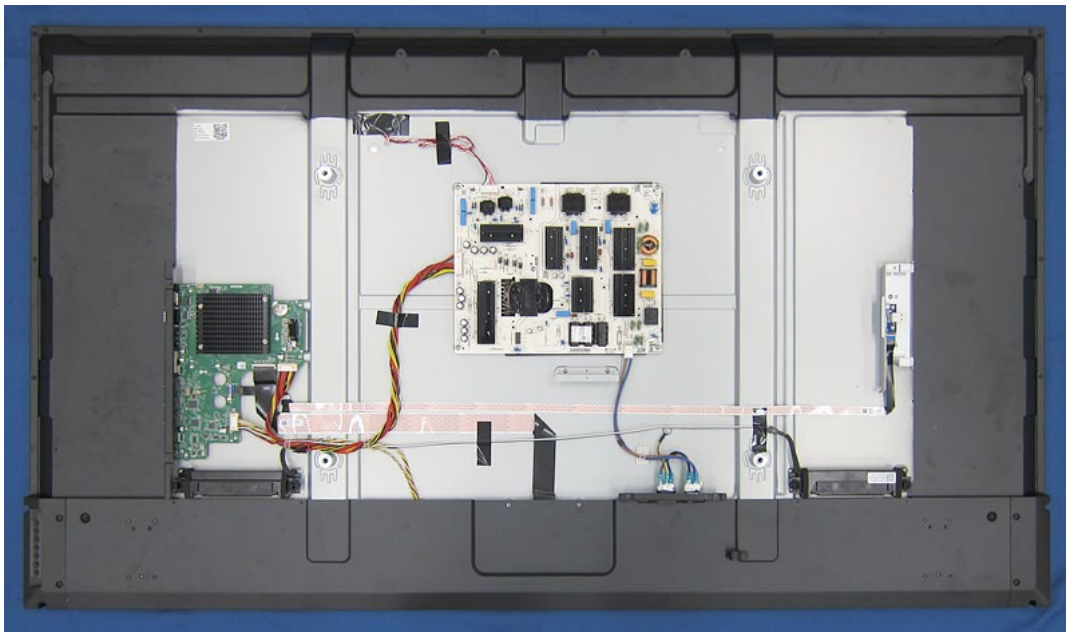
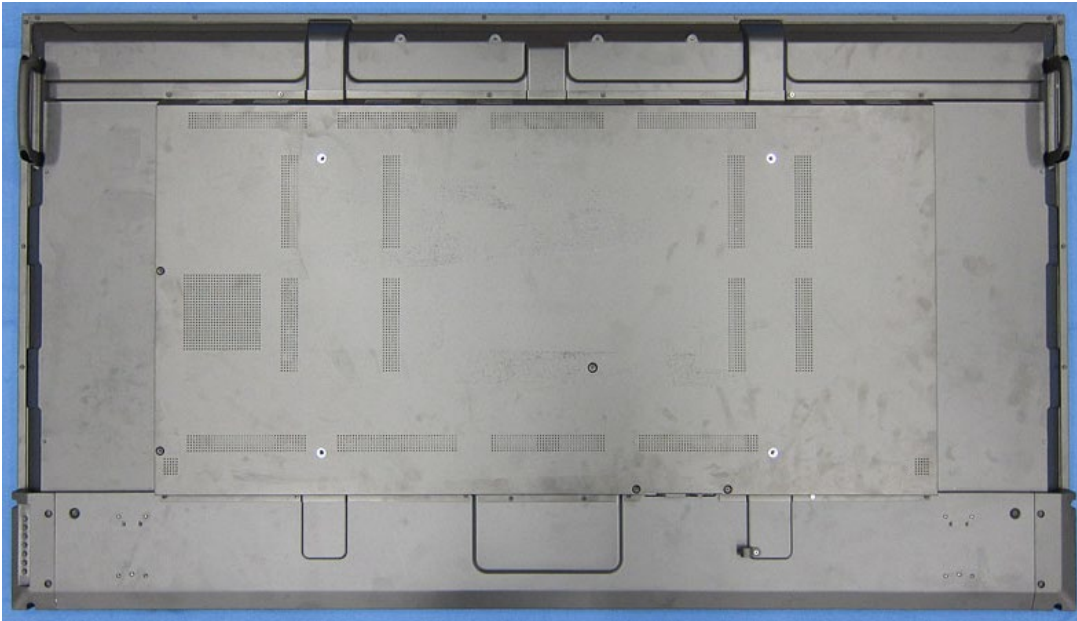
(2) PN-ME502



(3) PN-ME552



(4) PN-ME652



6. PWB and other electronic components

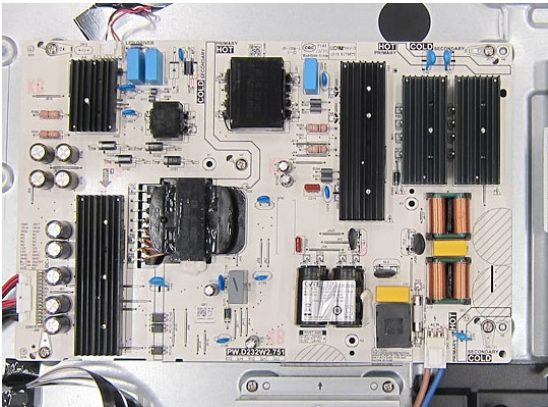
All electronic components can be removed by screw driver.

(1) MAIN PWB

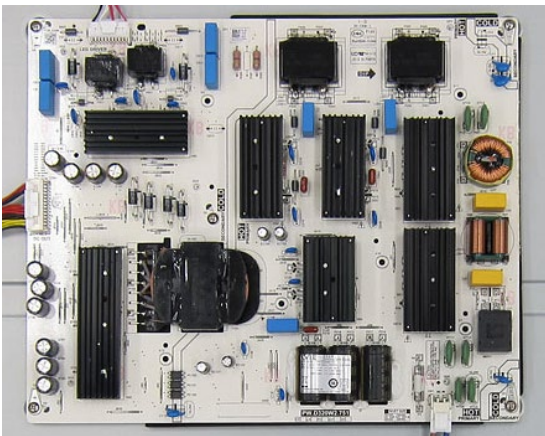


(2) POWER PWB

PN-ME432 / PM-ME502 / PN-ME552



PN-ME652



(3) T-CON PWB

PN-ME432



PN-ME502



PN-ME552



PN-ME652



(4) KEY PWB



(5) IR PWB



(6) WIFI CTL PWB



(7) Speaker



7. LCD Module bezels

(1) PN-ME432/PN-ME502/PN-ME552



(2) PN-ME652



8. Parts List

The spare parts listed in the column "Spare Parts" below are kept available in accordance to legal requirements of EU Regulation 2019/2021 for professional repairer.

Spare Part	Part Name/ Element of Part
a. Internal power board	Power PWB
b. Connectors to connect external equipment	Main PWB
c. Batteries and Accumulators	not applicable
d. DVD/Blue-Ray module	not applicable
e. HD/SSD module	not applicable